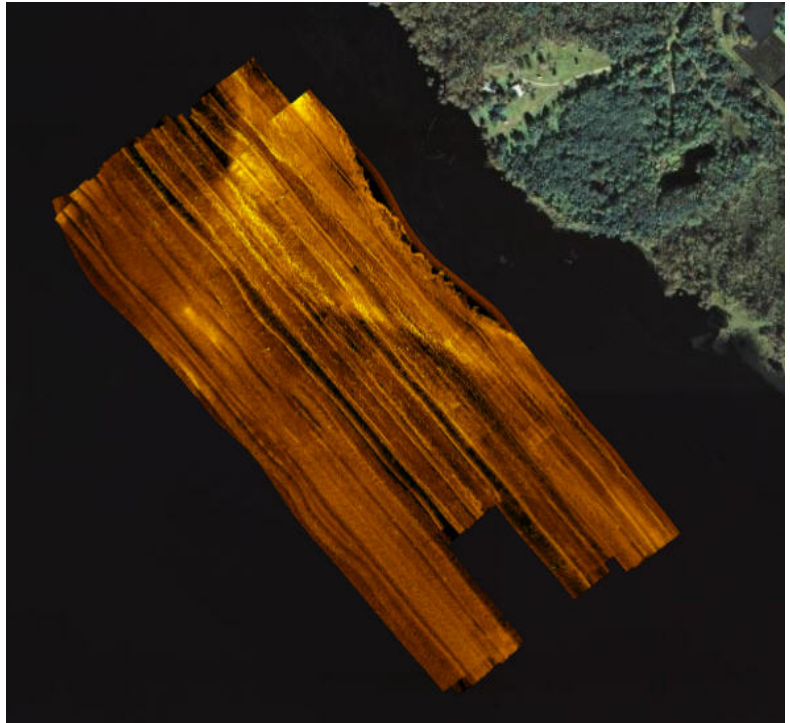


Revealing an Ancient Landscape Lake George, FL

The bright yellow area is a paleo-shoreline, once a home for people over 10,000 years ago. Now submerged in Lake George, Florida, this sonar survey was able to help identify where to accurately predict and groundtruth archaeological sites from some of our earliest North American ancestors.

Ten thousand years ago Lake George, located in central Florida, had a much lower lake level. This shoreline was inhabited by some of Florida's earliest residents. Evidence of their occupation still exists in the form of archaeological sites. In order to locate the sites and refine predictive models for site location sonography can be used to define these paleo shorelines, as seen here by the lighter yellow line in the mosaic.



The sonar used here was a Klein 3900 Search and Recovery sidescan sonar set to 30m range, 900kHz, both channels mosaiced, set to see-through and viewed as Klein MSTL Bronze.

Submitted by:

Brendan Burke

Archaeologist/ Logistics Director at St. Augustine Lighthouse and Museum – LAMP

<http://www.staugustinelighthouse.com/>