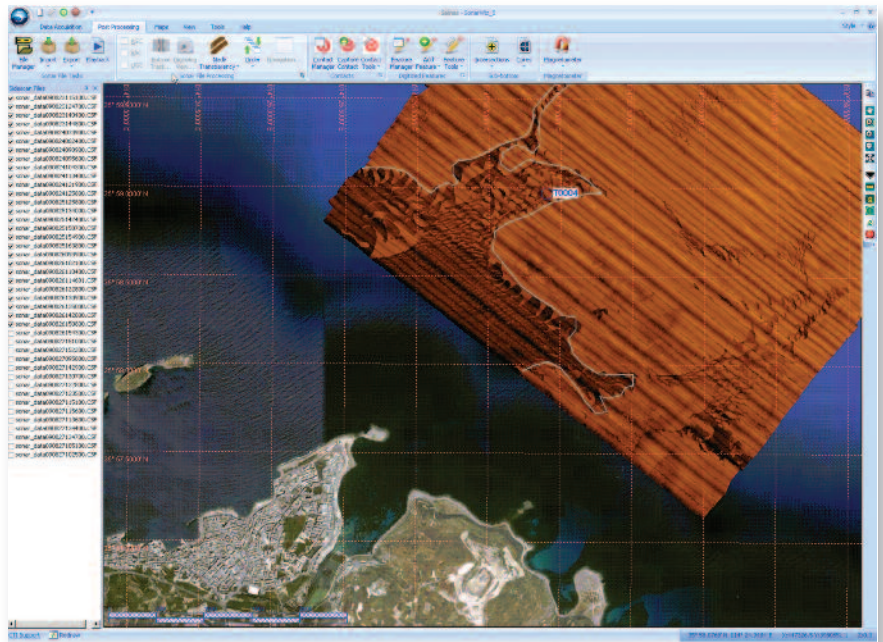


Sonar mapping made easy

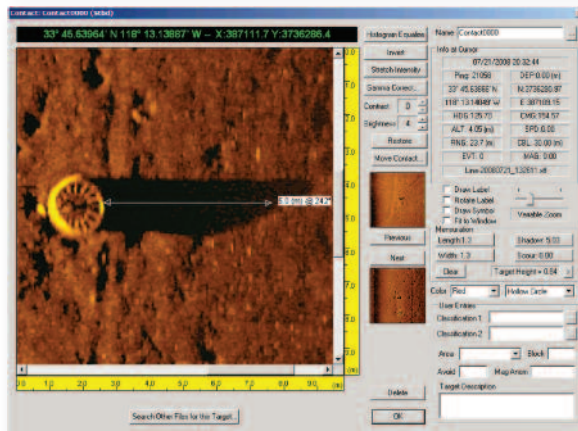
SonarWiz 5 is a complete data acquisition and survey management system made up of powerful yet easy to use tools that will help surveyors increase productivity, simplify the process, and produce high quality outputs.

Key Benefits

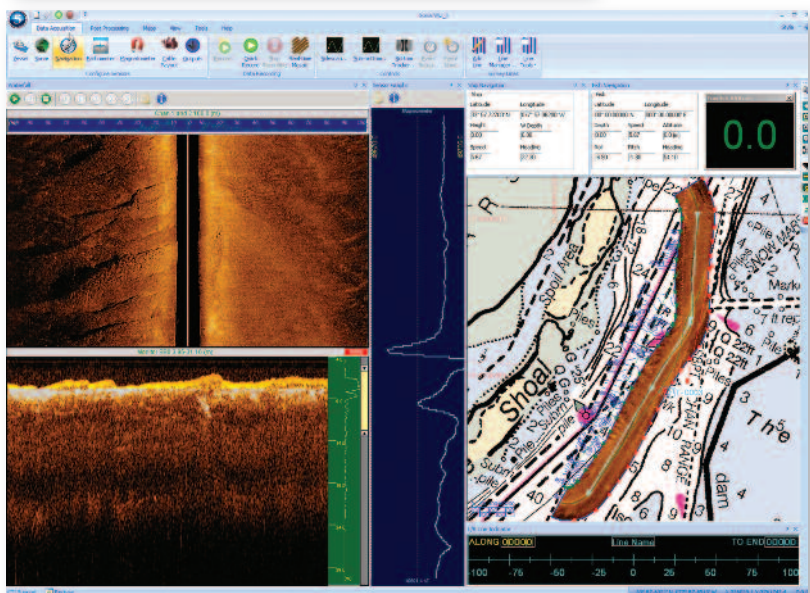
- ➔ Only have to learn one powerful, easy to use software to complete any sonar survey.
- ➔ Advanced interactive planning tools lead to efficient and cost effective survey time on the water.
- ➔ Reduce costs with real-time mosaic to confirm quality and coverage before leaving operation area.
- ➔ Customize desktop to meet job requirements, save and recall for easy mission setup.
- ➔ Intuitive interface follows survey workflow methodology



High-definition mosaic



Target analysis



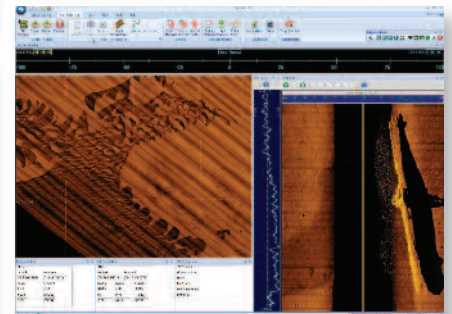
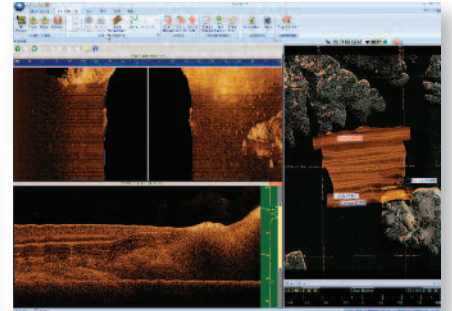
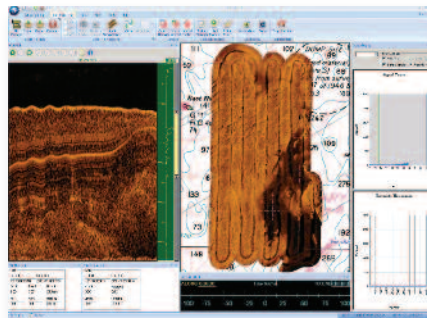
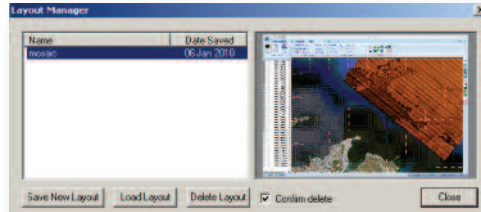
Operate multiple platforms simultaneously—Real-time data acquisition, magnetometer, sub bottom and sidescan

SonarWiz 5 is designed to work the way you do

SonarWiz 5 includes many key features making it extremely easy for surveyors to use. Designed to follow survey workflow methodology, it's easy to start using the system immediately.

Layout Manager

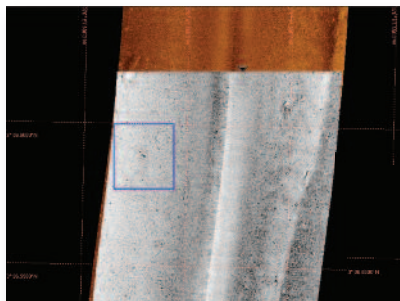
One major advantage of SonarWiz 5 is the new layout manager. It's designed so you can customize the desktop to more closely match your own survey workflow. Position windows, status displays and indicators right where you want them, save and recall to use again. You can easily switch between different data displays for different types of surveys. You'll save time setting up each survey map and minimize the disruptions that can occur when switching between different surveys or different operations.



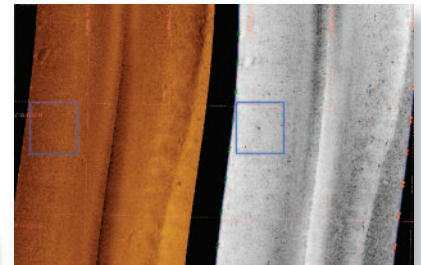
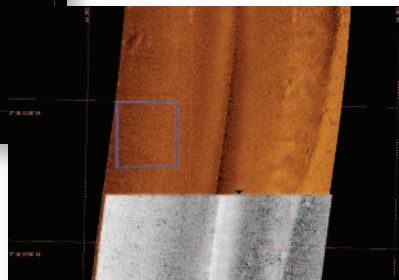
Layout Manager makes mission setup easy—each and every time

Change Detection

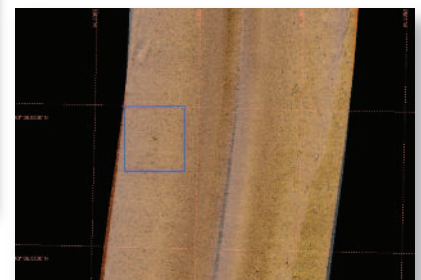
Change detection is a frequent request that can often be time consuming. SonarWiz 5 simplifies the process of comparing a new data set to a baseline data set to help sonar analysts quickly identify bottom changes. This is essential for Port Security, Navy Route surveys, habitat monitoring, and engineering applications.



Swipe



Line Shift



Transparency

From mission planning, data acquisition and post processing you won't find a more complete system.

Survey and Mission Planning

Advanced and interactive planning tools lead to efficient and cost effective survey time on the water.

- ➔ Load background maps from almost any map type to provide some geographical context.
- ➔ Use the automated survey line generator to create survey grid patterns in several different ways:
 - ➔ Parallel to a reference line
 - ➔ Fill a polygon with lines at user specified spacing and bearing automatically and trimmed to the edges of polygon.
 - ➔ Fill a rectangle and then stretch or rotate the rectangle to adjust the lines.
 - ➔ Choose from conventional or efficient survey line patterns.
- ➔ Estimate how much time various survey line patterns will take. Generate a report of planned survey lines and time estimates for each survey line and total survey.
- ➔ Export your preplanned survey to your GIS or CAD system using the Survey Line Export tools.
- ➔ Generate a planned survey map image in several different formats including: GeoPDF, GeoTiff, ECW, JPEG 2000 and Google Earth.

Data Acquisition

Quality and coverage of survey verified before leaving operation area.

- ➔ Use the new Layout Manager to position windows, status displays and indicators right where you want. Save favorite window layouts, and then recall that layout to use over again.
- ➔ Decide which parameters to display and monitor with the user-configurable System Info Display window. Name and save different configura-

tions so you can easily switch between different data displays when conducting different types of surveys.

- ➔ Integrate and monitor all of your sensors.
- ➔ The Real-time Mosaic Mode control gives you full control over how to manage the real-time mosaic generation process. If you are working on a very large survey with hundreds of sonar files, this feature lets you tune the system for the best performance while displaying only the data that you need to see.
- ➔ Record in industry standard XTF format or raw vendor specific Edgetech JSF and GeoAcoustics GCF raw file formats allowing you to preserve the full fidelity of the sonar data that go beyond the limits of the XTF file format.
- ➔ Monitor the positioning quality with the GPS Quality parameter indicators for HDOP, Positioning Mode, DGPS Correction Age, Number of Satellites and more.
- ➔ Detect changes between old and new surveys by adjusting the transparency of the current real-time sonar data overlaid on a previous sonar data set in the background so you can easily see both surveys at the same time.
- ➔ View targets in real-time using the new Target Strip window to display the most recently captured contacts in a filmstrip-style window.
- ➔ Left-right survey line steering indicator makes the helmsman's job easy.
- ➔ Display dual frequency sidescan sonar channels and sub-bottom simultaneously using the Real-time QC-sonar waterfall display.
- ➔ Supports simultaneous acquisition of sonar, navigation sensor, depth sensor, payout meter and magnetometer.
- ➔ Contact capture and feature digitizing tools allow features to be located and classified on the mosaic during or after data acquisition.

- ➔ Comprehensive real-time signal processing and gain controls including Auto Gain, Auto TVG, Manual Linear Gain and Manual TVG. All gains affect only the display and never the raw recorded data.
- ➔ Real-time bottom tracker automatically tracks towfish height above the seafloor saving time in the post-processing phase.

Post Processing

Easily combine different data formats to create sophisticated reports.

- ➔ Supports over 20 sidescan data formats, 10 sub-bottom data formats and unlimited magnetometer data formats so you can post-process data collected from most third-party sonar data acquisition systems.
- ➔ Generates crisp, dynamic mosaics quickly using the new 32-bit display.
- ➔ Excels at large mosaics and with the new export formats like Erdas Imagine and JPEG 2000 you'll no longer be bound by the 4G pixel limit of GeoTiff.
- ➔ Generate sonar contact reports direct to PDF, Open Office, Microsoft Word and HTML with more control over content and formatting.
- ➔ Display and report on any subset of your contact database using the SQL-based query engine. Now you may build a report and a matching mosaic image with only the contacts that match your specified query.
- ➔ Supports basemaps and overlays in raster and vector formats including BSB, S-57, VPF/VMAP, ECW, DXF, Shape files, GeoTiff and many more charting, GIS and CAD formats.
- ➔ Export in many raster and vector data types including sonar mosaics, digitized features, depth contours, magnetometer contours, survey and others to Google Earth KML/KMZ format.
- ➔ Use the advanced navigation editor ZEdit to edit CSF or XTF files directly.

Everything you need in one application

SonarWiz 5 is an all-in-one real-time acquisition suite of programs that will meet all of your sonar mapping needs, save you time, and minimize your training costs.

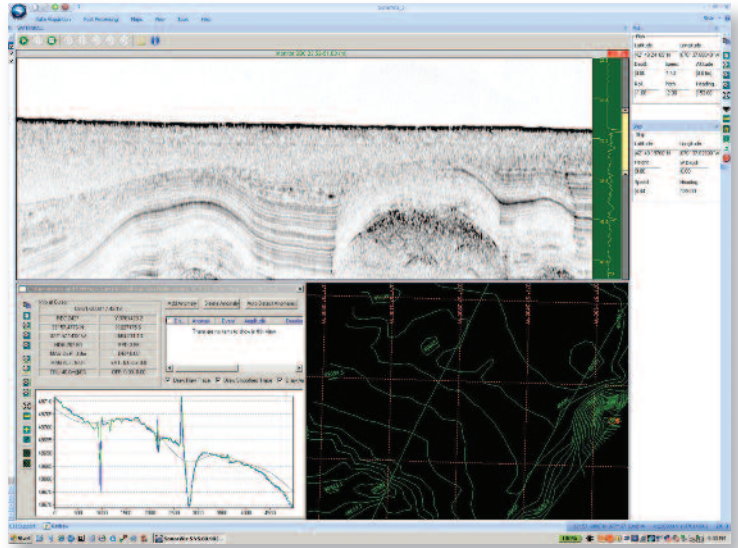
SonarWiz 5 helps you streamline the survey process and simplify the number of software programs you need to learn. It operates with almost all sonar manufacturers, so you won't need to re-familiarize yourself with different software each time you need to use different equipment.

SonarWiz 5 interfaces with all brands of commercially available side scan sonars, sub-bottom profilers, and magnetometers and echo sounders.

System Interfaces currently available:

- Analog Sonars
- Benthos
- C-Max
- Edgetech
- Geoacoustics
- Klein
- Knudsen
- Imagenex
- Innomar
- Marine Sonic Ltd.
- Odom
- SyQwest
- Tritech

and more



Training and Customer Support

We offer comprehensive training programs tailored to meet your specific needs. Training is offered at customer sites on demand or you can attend our biannual workshop for hands-on training. More information about upcoming workshops is available on our website.

Experience unmatched customer support. Benefit from product improvements which are influenced by our customer needs.



Chesapeake Technology, Inc.
888 Villa St, Suite 200
Mountain View, CA 94901 USA
voice: 650.967.2045
fax: 650.961.6734
sales@chesapeaketech.com
www.chesapeaketech.com



**Ready to see how *SonarWiz 5*
can make sonar mapping easy?
Download a free trial version today at
www.chesapeaketech.com/sw5trial.**